

Letter from the Executive Director

The current global economic crisis is having a significant impact on the non-profit sector and The Historical Society of the Town of Greenwich is no exception. Measures have been implemented to reduce our operating expenses but the support of our members and donors will be crucial to our ability to weather the storm so that we may continue to provide the unique services and education programs our community has come to expect from us.

For more than 75 years The Historical Society of the Town of Greenwich has been the acknowledged and unparalleled preserver, interpreter and promoter of Greenwich history. For 50 of those years the Historical Society has also served as the steward of the Town's only National Historic Landmark. We operate the only professionally-staffed research library and archive dedicated to Greenwich history and the Cos Cob art colony. Our research has supported the work of renowned historians, scholars and curators as well as student researchers, genealogists, local historians and preservationists. We have produced over 30 exhibitions and have published monographs, exhibition catalogs, journals and books on history, art and architecture. Our school programs, like the slavery program featured January 23rd in *Greenwich Time*, provide unique learning experiences to over 4000 children each year.

Please contribute to our Annual Fund before our June 30, 2009 fiscal year end, and consider renewing your membership, joining our major donor circle (The Greenwich Historic Trust) with a gift of cash or stock, or offering your services as a volunteer. Help us build awareness of the Historical Society's work and tell us what matters most to you. Visit our website, www.hstg.org, to learn more about the many ways we serve our community. I hope to see you at our programs this spring.

Sincerely,

Debra Mecky

Debra Mecky



Antiquarius 2008 Brings Critical Support to Historical Society

Antiquarius 2008 yielded a net profit of a quarter million dollars to support the Historical Society's education programs at Bush-Holley Historic Site. Funds raised from Antiquarius directly offset the expenses of educating children in our community about American History. For example, over 800 third graders visit Bush-Holley Historic Site each year and receive a classroom visit from Sarah Bush to learn about her years in Cos Cob from 1777 to 1824. Since 1998 funds raised by Antiquarius have made it possible to serve 40,000 students.

The Historical Society is deeply grateful to the over 120 Antiquarius volunteers without whom the week-long series of events would not be possible. Sincere appreciation also goes to our individual patrons and generous corporate sponsors including Betteridge Jewelers and David Ogilvy & Associates Christies Great Estates, One River Road, LLC, F. Schumacher & Company, RSR Partners, Cummings and Lockwood, Nestle Waters North America, W.R. Berkley Corporation, and media sponsors The Advocate and Greenwich Time and Greenwich and At Home Magazines. *

Appeal for Annual Giving

The Historical Society's Annual Fundraising Program is in progress and your participation is vital to the health of this treasured Greenwich resource. Please consider making a contribution of \$25 or more to provide for the stewardship of Bush-Holley Historic Site and to support high quality education programs for youth and adult audiences.

Did you know that the Historical Society does not receive any funding from The Town of Greenwich? Individual contributions (not tax dollars) from the people of Greenwich and surrounding communities make it possible to care for the site and provide cultural programming year-round.

Please consider making a gift today. Mail your contribution to the Annual Fund of The Historical Society of the Town of Greenwich, 39 Strickland Road, Cos Cob, CT 06807. Please call Anne Bradner, Director of Development, to receive further information and note that a copy of our annual report is available at www.hstg.org by clicking on "Support."

Thank you for your generosity. Your gifts help to preserve our past and enhance our future.



(clockwise, from far left) Suzanne Frank, Robert Getz, Amy Pennington, Jeanine Getz at the Preview Party; Bette & Lee Kraus and co-chair Fraser Bennett Beede; Roxanne Vanderbilt and Katie Simon at the Preview Party.



An Evening with Sam Pryor III

← The members of the Historical Society's Chairman's Advisory Council and invited guests enjoyed a delightful evening on January 15 that was warm with stories of Greenwich history and community spirit despite the frigid winter weather. The focus of the evening was featured speaker Sam Pryor III who introduced his new book about his father, *Make It Happen: The Fascinating Life of Sam Pryor Jr. 1898-1986*.

Sam Pryor, Jr. was a key figure in Greenwich for most of the 50 years he lived here and was even known by many as "Mr. Greenwich." He influenced Connecticut politics in the 1930s and, as a senior executive for Pan Am, played a critical role in the development of the airlines industry.

The evening was graciously hosted by Jannell and Lance Bakrow, who own and have beautifully restored the Pryory which was once home to three generations of Pryor family members. More than 100 people attended the evening, which was greatly enjoyed by all. *

(left, from top) Regina Gabelli and Susan Bevan Daddino; Lynn Garelick, Betsy Chandler-Philadelphia, Sam Pryor and Rita Henley Jensen; Will Browne and Sally Lawrence.



Kim Bruce and Janice Stearns of The Bank of Greenwich, Historical Society Executive Director Debra Mecky and Heather Smeriglio from The Bank of Greenwich.

Candlelight Open House Draws A Crowd

→ On Sunday evening, December 14, nearly 500 people escaped crowded stores and holiday traffic jams to enjoy the Candlelight Open House at Bush-Holley Historic Site. The evening was free to the public, thanks to David Ogilvy and Associates Christies Great Estates and The Bank of Greenwich. A buffet of delicious desserts and drinks was made possible by Sweet Lisa's Exquisite Cakes and Porricelli's Food Mart. Education staff and volunteers coordinated the activities for children. Girl Scouts sang carols and a tree-lighting ceremony took place in the garden. *

Textile Inventory Grant

The Historical Society's textile collection has grown considerably since it was established in 1931 and now contains over four hundred items, the majority dating to the nineteenth and early twentieth centuries.

Costumes and textiles are one of the most tangible of our historic artifacts because they reflect the choices of individuals – what they wore as well as what they valued. Many of the pieces in the collection come from families who have a long history in Greenwich and are a window into changing family values, social mores, continuity and change over time.

The Historical Society received a grant from the Connecticut Humanities Council to inventory the collection in order to support collections and exhibition planning and future programming decisions. Historical Society curator Karen Frederick is nearing completion of the project, assisted by Kathleen Craughwell-Varda, a costume and textile historian. They have created detailed descriptions of the pieces and are documenting them digitally. The inventory will serve as an invaluable resource for future exhibitions, such as the upcoming exhibitions on quilts and weddings. It will make the collection more accessible for research and make it easier to evaluate the significance and condition of the pieces for future conservation. *

(below) Crewelwork Seat Cover, 18th century, wool on linen, collection of The Historical Society of the Town of Greenwich



THE HISTORICAL SOCIETY OF THE TOWN OF GREENWICH
BUSH-HOLLEY HISTORIC SITE

NEWS+PROGRAMS

HOURS

Office
Monday–Friday, 9–5

Archives

Tuesday & Thursday, 10–4
or by appointment

Museum Gallery & Shop

Tuesday–Sunday, 12–4

Bush-Holley House by tour only

Winter: Saturday–Sunday,
1, 2, and 3
or by appointment for groups

TELEPHONE

203.869.6899

WEB SITE

www.hstg.org
www.bush-holley.org

OFFICERS

John A. Seel *Chairman*
Susan Larkin *Vice Chairman*
Susan Callaghan *Treasurer*
Carl S. Forsythe III *Secretary*
Isabel Malkin *Recording Secretary*
Debra L. Mecky *Executive Director*

CREDITS

Debra L. Mecky *Executive Director*
Sally Frank *Director of Marketing and Communications/Newsletter Editor, Photography*
Elaine Ubina *Photography*
Jack Design *Graphic Design*
Pyne-Davidson *Printing and Mailing Services*

The Historical Society's mission is to collect and preserve the ongoing history of Greenwich and to provide a center for its enjoyment and study at Bush-Holley Historic Site.



UPDATE

New Format for Historical Society News and Calendar

Throughout the year we receive valuable feedback from our members about our various communication vehicles both print and electronic. This new publication, which combines a newsletter, featuring stories about the latest Historical Society happenings and events, with a program guide that outlines our schedule of workshops, lectures and other activities, is the result of this input. The Historical Society offerings are rich and varied and it is our

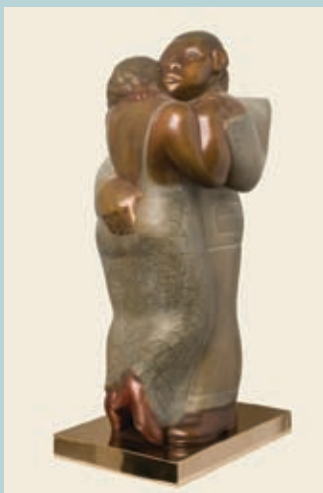
aim with this publication, produced four times a year, to keep our members up to date with news of our activities and the enriching programs we provide the Greenwich community. We hope you enjoy reading about our events, celebrations and openings; that you will sign up for some of our lectures or workshops; and that you will learn something you didn't know about the history of Greenwich and the Historical Society. *Sally Frank, Editor*

EXHIBITION

Kane Exhibition Extended to March 15

Due to the popularity of the exhibition, *Carved with Rasps and Chisels: The Sculpture of Margaret Brassler Kane (1909-2006)* has been extended to Sunday, March 15.

Come learn about Kane's bold stylized creations in wood, stone, clay, plaster and bronze. Subjects include portrait busts, figure studies, animals and striking, large-scale reliefs depicting 20th century events and prevailing social conditions.



The Museum Gallery, Visitor Center and Museum Shop are open year-round, Tuesday through Sunday, 12 to 4 p.m.

For information on Group Reservations including a docent-led tour of the exhibition on non-public days, please call 203 869-6899, ext 18.

Harlem Dancers, 1936
Bronze

Did you know?

Bush-Holley Historic Site is a member of the Connecticut Art Trail, a partnership of fifteen world-class museums and historic sites across the state. Visit www.arttrail.org for information about member museums.



GALLERY EXHIBIT

If These Walls Could Talk: An Introduction to Bush-Holley House and Historic Site

Spring 2009

This spring, visitors will be invited to learn about Greenwich history through the people, events and daily life at Bush-Holley Historic Site over its more than 250 year past. This interactive family exhibit provides an overview of the five generations of Bush-Holley House residents through photographs, maps, letters, portraits and artifacts from the Historical Society's collection.

Call 203 869-6899, ext 18 or visit www.bush-holley.org.

PROGRAMS FOR CHILDREN AND ADULTS

Colonial Family Day

Saturday, March 7, 12 - 2 p.m.



Ever wondered what it would be like to take a step back in time to see what life was like? An interactive program for families offers a chance to explore what home life was like in colonial and Early America. Children will dress up in colonial clothes and uniforms, trying out toys of the period, write with a quill, cross stitch on a sampler, and pitch a tent as soldiers did. Activities take place in the open-hearth kitchen and Justus Luke Bush parlor

of Bush-Holley House, Archives and Education Center. Historical artifacts from the museum collection will be on view, including a revolutionary war musket, powder horn and cannon ball.

\$5 Historical Society family members, \$8 non-members Reservations recommended Call 203 869-6899, ext 18 or visit www.bush-holley.org.

LECTURE AND LUNCH

Flowers in Nature and Art: Elmer and Constant Holley MacRae

Friday, April 24, 11 a.m. - 1 p.m.



Historical Society Curator Karen Frederick explores the flower paintings and woodcarvings of Elmer MacRae and the floral arrangements of Constant Holley MacRae, preserved in vintage photographs. From their marriage in 1900 until Elmer's death in 1953, Constant and Elmer lived in "The Old House" (today's Bush-Holley House), sharing a love of the house and its surrounding gardens.

Lecture: \$8 members, \$10 non-members Bring a bag lunch or pre-order a box lunch. Lunch, 12:30 p.m. Box lunch, \$10 Call 203 869-6899, ext 18 or visit www.bush-holley.org.

Elmer Livingston MacRae
Untitled [Hollyhocks], 1915
Oil on burlap
Collection of The Historical Society of the Town of Greenwich
Museum purchase with funds from Mr. & Mrs. Charles M. Royce



CAMP

Summer Camp Registration Underway

It's already time to register for Bush-Holley History & Art Camp. Offered for children in 2nd through 7th grades, the camp features a highly interactive two-week program (Mondays through Fridays, 9:30 a.m. to 2:30 p.m.) with focuses on the history and art themes that characterize Bush-Holley Historic Site, Colonial and Early American history and Cos Cob art colony. Camp is staffed by educators and experienced counselors who have a special interest in history, art or education. Sessions are fun, engaging and hands-on. A field trip and a Friday Parents Day are part of every week.

Camp fees are \$475 two-week session / \$325 single week (if available). Camper families are automatically enrolled as members of the Historical Society (a \$65 value). Current memberships are renewed for one year.

For a complete camp brochure, visit www.bush-holley.org or call 203.869.6899, ext. 18. To register, send a completed registration form (available online) and a non-refundable deposit of \$100 per child (\$50 for each additional sibling) to: Camp Director, HSTG, 39 Strickland Road, Cos Cob, CT 06807.

Reminder: Priority Registration for HSTG Family Members closes March 2

Call 203 869-6899, ext 18 or visit www.bush-holley.org.

Did you know?

The Historical Society of the Town of Greenwich is accredited by the American Association of Museums. This designation is earned by only 5% of museums nationwide.

MAY PROGRAM PREVIEW

A Day of Twachtman and Weir
Lecture by Lisa Peters, PhD

Monday, May 18, 9:30 a.m. to 2 p.m.

Board a morning shuttle at Bush-Holley Historic Site to visit the landscape and grounds of John H. Twachtman so familiar in his paintings and prints. Afterward, return to Bush-Holley Historic Site for lunch, followed by a lecture by Lisa Peters, PhD; *John H. Twachtman and J. Alden Weir: A Confluence of Friendship and Art*. The lecture will focus on the personal and artistic friendship of Twachtman and Weir.

For full program details and reservations, visit www.bush-holley.org.

Landscape tour provided courtesy of John Nelson and Randy and Laurie Atcheson.



John H. Twachtman
Untitled [Saltbox], ca. 1895
Oil on canvas
Collection of The Historical Society of the Town of Greenwich

Lecture and lunch: \$20 members \$24 non-members

Day pass (includes visit to Twachtman grounds, lunch and lecture): \$40 members \$50 non-members

Call 203 869-6899, ext 18 or visit www.bush-holley.org.

TOURS

New Sunday Family Tours of Bush-Holley House

Family Tours of Bush-Holley House are now available every Sunday at 1 p.m. Bring the kids and the whole family to Bush-Holley House for a special family-oriented tour. A kid-friendly, family gallery guide, *Look and Learn Inside Bush-Holley House* leads the way through the rooms of this historic house. Docents will be on hand to answer questions. Then, take the family across the lawn into the museum for a special scavenger hunt through the current exhibition. Learning is fun, even on the weekends!

New Winter Hours for Bush-Holley Historic Site House & Gallery Guided Tours

New Winter Hours are in effect from January 1 to March 31. Guided tours of Bush-Holley House are offered on Saturday and Sunday only at 1, 2, and 3 p.m. Admission is free for members and children under 6; non-member adults are \$6, seniors and students are \$4. Regular Hours resume April 1. Tours are held Thursday through Sunday at 1, 2, and 3 p.m.

The gallery remains open throughout the year; Tuesday-Sunday; from noon to 4 p.m. except New Year's Day, Easter Sunday, Independence Day and Christmas Day. Visit www.bush-holley.org for more information.

Call 203 869-6899, ext 18 or visit www.bush-holley.org.

APRIL VACATION WEEK WORKSHOPS

Painting Nature

Tuesday, April 7, from 10 a.m. - 12 p.m.

Cos Cob art colony artist Elmer MacRae, whose studio and art works are on display at Bush-Holley Historic Site, found inspiration for his large floral paintings in the gardens and landscape at Bush-Holley House. Children will examine two large murals recently installed in the barn and use tempera paints to design their own large nature-themed works of art.

\$10 members, \$15 non-members
Age 6 and up



Nature in Origami

Wednesday, April 8, 10 a.m. - 12 p.m.

Cos Cob art colony artist Genjiro Yeto taught his fellow artists Japanese traditions from his culture including origami. Today origami cranes adorn the studio of Elmer MacRae inside Bush-Holley House. Guided by members of the Japan Society of Greenwich, learn to fold origami creations inspired by nature including flowers and birds.

\$10 members, \$15 non-members
Open to parents and children age 7 and up
Call 203 869-6899, ext 18 or visit www.bush-holley.org.



TOUR

Back by popular demand!

Field Trip to Polich-Tallix Fine Art Foundry

Thursday, March 5, 9 a.m. - 3 p.m.

Come on a rare private tour of Polich-Tallix Foundry one of the largest art foundries in the country where Margaret Brassler Kane cast her sculptures. Walk through the main work arera—the size of a football field—and see first hand, each step of the lost wax process, from mold making to the molten bronze pour to finishing and patinization. During the tour you will see experienced and talented craftsman using both traditional methods and high technology to create modern sculptural masterpieces.

\$60 members, \$70 non-members. Space limited. Fee includes transportation, tour and a three-course lunch at Torches restaurant overlooking the scenic Hudson River. Advance payment required by February 26 to secure reservation. Call 203 869-6899, ext 18 or visit www.bush-holley.org.

SIGN UP FOR PROGRAMS, ANNUAL FUND & MEMBERSHIP

To register for programs online, go to www.bush-holley.org

NAME

HOME ADDRESS

PHONE

EMAIL

Mark all programs for which you wish to register by writing the number of participants in the corresponding box

FIELD TRIP TO POLICH-TALLIX FINE ART FOUNDRY Thurs., March 5	LECTURE AND LUNCH: FLOWERS IN NATURE AND ART Fri., April 24
no. <input type="text"/> \$60 members	no. <input type="text"/> \$8 members
no. <input type="text"/> \$70 non-members	no. <input type="text"/> \$10 non-members
	no. <input type="text"/> \$10 box lunch

COLONIAL FAMILY DAY Sat., March 7	A DAY OF TWACHTMAN AND WEIR Mon., May 18
no. <input type="text"/> \$5 Members	no. <input type="text"/> <i>Lecture & lunch only:</i>
no. <input type="text"/> \$8 non-members	no. <input type="text"/> \$20 members
	no. <input type="text"/> \$24 non-members
	no. <input type="text"/> <i>Landscape tour, lecture & lunch:</i>
	no. <input type="text"/> \$40 members
	no. <input type="text"/> \$50 non-members

PAINTING NATURE Tues., April 7	
no. <input type="text"/> \$10 members	
no. <input type="text"/> \$15 non-members	

NATURE IN ORIGAMI Wed., April 8	
no. <input type="text"/> \$10 members	
no. <input type="text"/> \$15 non-members	

TOTAL PROGRAMS	\$
----------------	----

GIVE TO THE ANNUAL FUND

I would like to make a donation to the Annual Fund

To make your donation online, go to www.hstg.org and click on "Support"

TOTAL ANNUAL FUND	\$
-------------------	----

MEMBERSHIP TO THE HISTORICAL SOCIETY OF THE TOWN OF GREENWICH

Select membership level:

<input type="text"/> \$30 Teacher	<input type="text"/> \$100 Sponsor
<input type="text"/> \$30 Senior	<input type="text"/> \$250 Donor*
<input type="text"/> \$40 Individual	<input type="text"/> \$500 Patron*
<input type="text"/> \$65 Family	<input type="text"/> \$1,000 Benefactor*

* Donor level and above also receive a copy of *Building Greenwich* by Rachel Carley.

To become a member online, go to www.hstg.org and click on "Support"

TOTAL MEMBERSHIP	\$
------------------	----

PAYMENT for programs, annual fund, and/or membership

TOTAL PAYMENT	\$
---------------	----

Please make checks payable to: HSTG

Or charge to: MasterCard Visa American Express

NAME ON ACCOUNT

ACCOUNT #

EXPIRATION

SIGNATURE



BUSH-HOLLEY HISTORIC SITE
39 STRICKLAND ROAD, COS COB, CT 06807
THE HISTORICAL SOCIETY OF THE TOWN OF GREENWICH

SEND PAYMENT AND REGISTRATION FORM TO:
Bush-Holley Historic Site/Programs
39 Strickland Road
Cos Cob, CT 06807